

Part 1

G G G G F E G C D E E E D C C B



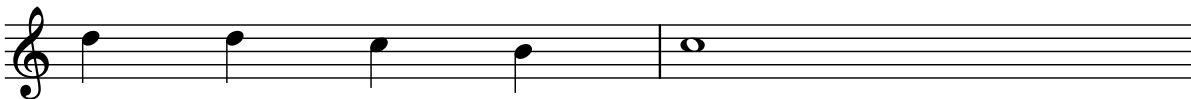
4 A A A B C B C A G A G E G G



6 G G G F E G C D E E E D C C



8 D D C B C



2 *Part 2*

10 G F E G C D E C

Musical staff for measures 10 and 11. Measure 10 contains notes G4 (quarter), F4 (quarter), E4 (quarter), G4 (quarter), C4 (quarter), D4 (quarter), E4 (quarter), and C4 (quarter). Measure 11 contains a whole note C4. The notes are written on a treble clef staff.

12 A B C B C A G C

Musical staff for measures 12 and 13. Measure 12 contains notes A4 (quarter), B4 (quarter), C4 (quarter), B4 (quarter), C4 (quarter), A4 (quarter), G4 (quarter), and C4 (quarter). Measure 13 contains a whole note C4. The notes are written on a treble clef staff.

14 G F E G C D E C C

Musical staff for measures 14 and 15. Measure 14 contains notes G4 (quarter), F4 (quarter), E4 (quarter), G4 (quarter), C4 (quarter), D4 (quarter), E4 (quarter), and C4 (quarter). Measure 15 contains two whole notes C4. The notes are written on a treble clef staff.

16 D D C B C G C

Musical staff for measures 16 and 17. Measure 16 contains notes D4 (quarter), D4 (quarter), C4 (quarter), B4 (quarter), C4 (quarter), G4 (quarter), and C4 (quarter). Measure 17 contains a whole note C4. The notes are written on a treble clef staff. A first ending bracket spans from the end of measure 16 to the end of measure 17, with a first ending sign (1.) above the bracket and a second ending sign (2.) above the bracket. The first ending sign is positioned above the C4 note in measure 17, and the second ending sign is positioned above the C4 note in measure 17. The staff ends with a double bar line.